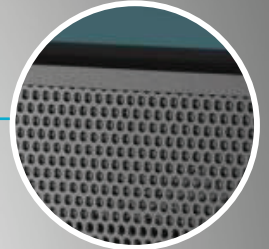
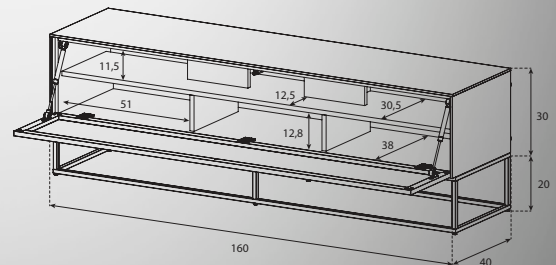


European
Manufactured

\$1399.99



Mesh Door



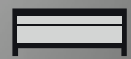
SLM 160-NG-PB-CG2

42 - 65"

35 KG

Laminated
MDP + Steel

W1600 x D400 x H500 mm



Introduction

Pure lines with functionality!

Enrich your interior with a piece of furniture with elegant lines. With its contemporary aesthetic, the SLM 160 becomes the centerpiece of the house and revitalizes your decoration.

Features

- Push to open perforated (mesh) metal door for hidden use of soundbar
- Opening at the backside for ventilation
- Steel cage leg

SONOROUS®

AV Supply Group | www.avsupply.co.nz & www.avsupplygroup.com.au

